

UPDATING UPDATING UPDATING UPDATING UPDATING UPDATING

Finishing Spec Core

Catalog No. **7070-12-05-08-0003**

1205081

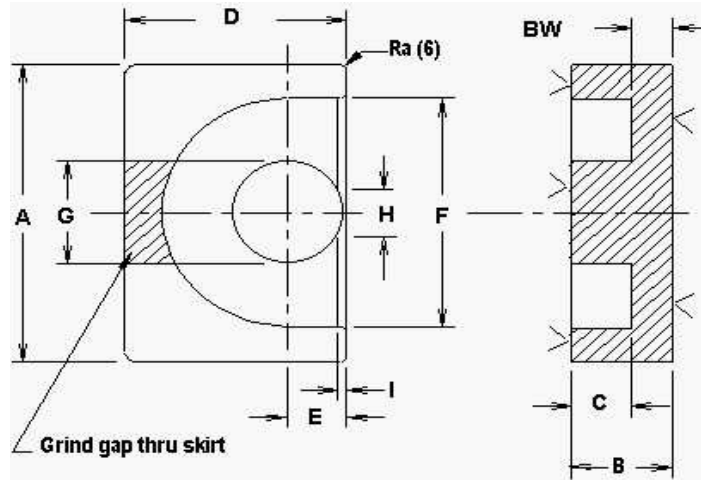
EP1

Rev Level **A**

Picture

1ST ISSUED 9/24/2007

Customer	Customer Part #



REQUIRED GRINDER BELT SPEED			
GRINDER	UPDATED	M/MIN	INCH/MIN
1	0	0.00	0.00
2	0	0.00	0.00
3	0	0.00	0.00
4	0	0.00	0.00
5	0	0.00	0.00

Gapping Wheel Dimension (Inch)	
Minimum	Maximum
0.168	0.206

GRIND SPECS

	B	C	BW	GRIND BACKWALL	GRIND MATING SURFACE	GAP DEPTH per pc. (inches)	AL VALUE nH/T*2	L CONTROL LIMIT mH
	inches	inches	inches					
Maximum	0.2060	0.1480	0.0610				8.4	0.00328
Nominal	0.2020	0.1450	0.0570	YES	YES	0.0405	8.0	0.00320
Minimum	0.1980	0.1420	0.0530				7.6	0.00312

L @ DC 1	L @ DC 2
mH min	mH min
ADC (AMPS)	ADC (AMPS)

Inductance (AL) Test Conditions mate with:								Grinding PCS/HR
Critical Spec. Al or Mech.	Tolerance	1 or 2 core GAP	Coil #	# Turns	Test Frequency kHz	Test Voltage Vrms	Test Flux Density Gauss	
AL	5.0%	TWO	581	20	100	0.050	5	

APPROVED FOR PRODUCTION _____ DATE _____

Comments
Use .190" grinding wheel

Dimensions:	A	D	E	F	G	H	J	COLOR CODE
	inches	inches	inches	inches	inches	inches	inches	
Maximum	0.465	0.309	0.077	0.376	0.136			
Nominal	0.453	0.301	0.073	0.369	0.133			
Minimum	0.441	0.293	0.069	0.362	0.130			

Packaging Comments
2 BLOCKS OF 12 SPACE BETWEEN BLOCKS

Packaging										
Method	Die Cut	Type of Box or Bag	pcs/bag or pcs/cell or # rows per board	# columns per board	Pieces / Board	Layers	Spacer Boards	Foam	Pcs/Box	WEIGHT OF BOX APPROX
SKIN	P4400	4400C	24	24	576	9	A/R	A/R	5184	20.1