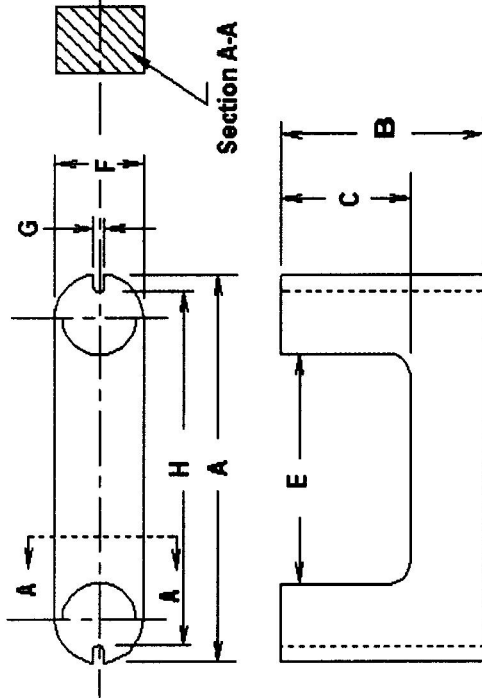


UPDATING UPDATING UPDATING UPDATING UPDATING UPDATING UPDATING UPDATING

Finishing Spec Core

Catalog No. 7070-41-19-11-0000
411911 U-core10

Rev Level	A	Picture	
Customer	Customer Part #		
Sun Electric Corporation	778-905		



GRINDER/UPDATED	M/MIN	INCH/MIN
1	0	0.00
2	0	0.00
3	0	0.00
4	0	0.00
5	0	0.00

L % #VALUE!
Licc=2/1e #VALUE!
Hdc #VALUE!

GRIND SPECS	B	C	BW	GRIND BACKWALL	MATING SURFACE	GAP DEPTH per pc. (inches)	AL VALUE nH/T^2	L CONTROL LIMIT mH
Maximum	0.7500	0.3830	0.3800				3335.0	1.20060
Nominal	0.7500	0.3750	0.3750	YES	YES		2688.0	1.06720
Minimum	0.7450	0.3670	0.3700				2001.0	0.93380

L @ DC 1	L @ DC 2
mH min	mH min
ADC (AMPS)	ADC (AMPS)

Inductance (AL) Test Conditions mate with 7070-41-19-11-0000

Critical Spec. AI or Mech.	Tolerance	1 or 2 core GAP	# Turns	Test Frequency kHz	Test Voltage Vrms	Test Flux Density Gauss	Test PCS/HR
AL	25%	NO	20	100	0.440	5	4348

APPROVED FOR PRODUCTION DATE

Comments

Use gauges #024 for toe out and #023 for toe in

Dimensions:	A	D	E	F	G	H	J	COLOR CODE
Maximum	1.652		0.775	0.470	0.130			
Nominal	1.620		0.750	0.460	0.125	1.390		
Minimum	1.588		0.725	0.450	0.120			

Packaging Comments

1.25" Space between each column, flip end cores down

Method	Die Cut	Type of Box or Bag	pcs/bag or pcs/cell or # rows per board	# columns per board	Pieces / Board	Layers	Spacer Boards	Foam	Pcs/Box	WEIGHT OF BOX APPROX
SKIN	P4400	4400C	14	5	70	4	3	1	280	22.6