

TSC Ferrite International

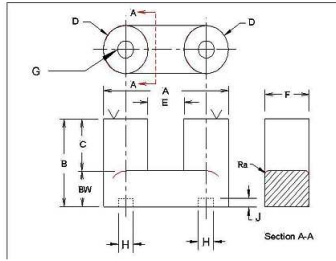


FIGURE 1

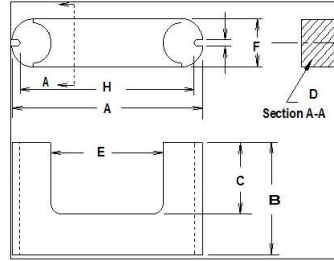


FIGURE 2

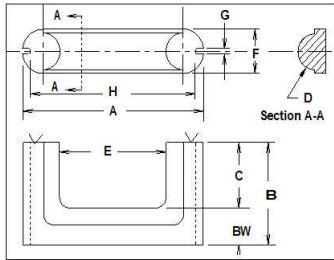


FIGURE 3

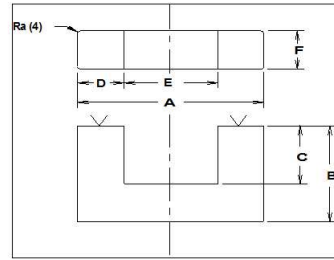


FIGURE 4

TSC FERRITE INTERNATIONAL U CORE DIMENSIONS

PART #	FIGURE	A		B		C		D		E		F		G		H	
		in	mm	in	mm	in	mm	in	mm	in	mm	in	mm	in	mm	in	mm
39-19-10	3	1.545 ±0.031	39.24 ±0.78	0.740 ±0.005	18.80 ±0.13	0.365 ±0.013	9.27 ±0.32	0.187 REF	4.75 REF	0.795 ±0.016	20.19 ±0.40	0.390 ±0.008	9.91 ±0.20	0.110 ±0.002	2.79 ±0.06	1.350 ±0.27	34.29 ±0.69
41-10-11	I Bar 2	1.620 ±0.032	41.15 ±0.82	0.388 ±0.005	9.86 ±0.13							0.460 ±0.009	11.68 ±0.23	0.125 ±0.003	3.18 ±0.06	1.390 REF	34.29 REF
41-21-11	2	1.620 ±0.032	41.15 ±0.82	0.812 ±0.005	20.62 ±0.13	0.437 ±0.013	11.10 ±0.32	0.230 REF	5.84 REF	0.750 ±0.015	19.05 ±0.38	0.460 ±0.009	11.68 ±0.23	0.125 ±0.003	3.18 ±0.06	1.390 REF	34.29 REF
41-22-11	2	1.620 ±0.032	41.15 ±0.82	0.875 ±0.005	22.23 ±0.13	0.500 ±0.013	12.70 ±0.32	0.230 REF	5.84 REF	0.750 ±0.015	19.05 ±0.38	0.460 ±0.009	11.68 ±0.23	0.125 ±0.003	3.18 ±0.06	1.390 REF	34.29 REF
41-25-11	2	1.620 ±0.032	41.15 ±0.82	1.000 ±0.005	25.40 ±0.13	0.625 ±0.013	15.88 ±0.32	0.230 REF	5.84 REF	0.750 ±0.015	19.05 ±0.38	0.460 ±0.009	11.68 ±0.23	0.125 ±0.003	3.18 ±0.06	1.390 REF	34.29 REF
41-30-11	2	1.620 ±0.032	41.15 ±0.82	1.200 ±0.015	30.48 ±0.38	0.825 ±0.013	20.96 ±0.32	0.230 REF	5.84 REF	0.750 ±0.015	19.05 ±0.38	0.460 ±0.009	11.68 ±0.23	0.125 ±0.003	3.18 ±0.06	1.390 REF	34.29 REF
64-40-24	U64 1	2.521 ±0.050	64.03 ±1.27	1.594 ±0.005	40.49 ±0.13	1.043 ±0.016	26.49 ±0.41	0.789 ±0.106	20.04 ±2.69	0.945 ±0.019	24.00 ±0.48	0.945 ±0.019	24.00 ±0.48	0.165 ±0.003	4.19 ±0.08	0.378 ±0.008	9.60 ±0.20
69-24-14	3	2.726 ±0.055	69.24 ±1.40	0.953 ±0.005	24.20 ±0.13	0.500 ±0.014	12.70 ±0.36	0.257 ±0.005	6.53 ±0.13	1.705 ±0.34	43.31 ±8.64	0.545 ±0.011	13.84 ±0.28	0.140 ±0.003	3.56 ±0.08	2.483 ±0.050	63.07 ±1.27
81-13-16	I Bar 3	3.205 ±0.064	81.36 ±1.63	0.500 ±0.005	12.70 ±0.13							0.625 ±0.013	15.88 ±0.32	0.140 ±0.003	3.56 ±0.07	2.990 ±0.060	75.95 ±1.52
81-33-16	3	3.205 ±0.064	81.36 ±1.63	1.285 ±0.005	32.64 ±0.13	0.750 ±0.010	19.05 ±0.25	0.312 REF	7.92 REF	2.000 ±0.030	50.80 ±0.76	0.625 ±0.013	15.88 ±0.32	0.140 ±0.003	3.56 ±0.07	2.990 ±0.060	75.95 ±1.52
93-28-16	I Bar 4	3.661 ±0.073	92.99 ±1.85	1.102 ±0.005	27.99 ±0.13							0.630 ±0.052	16.00 ±32				
93-76-16	4	3.661 ±0.073	92.99 ±1.85	2.992 ±0.005	76.00 ±0.13	1.890 ±0.27	48.01 ±0.69	1.102 -0.022	27.99 ±0.56	1.457 ±0.029	37.01 ±0.74	0.630 ±0.052	16.00 ±32				
93-28-30	I Bar 4	3.661 ±0.073	92.99 ±1.85	1.102 ±0.005	27.99 ±0.13							1.181 ±0.024	30.00 ±56				
93-76-30	4	3.661 ±0.073	92.99 ±1.85	2.992 ±0.005	76.00 ±0.13	1.890 ±0.27	48.01 ±0.69	1.102 -0.022	27.99 ±0.56	1.457 ±0.029	37.01 ±0.74	1.181 ±0.024	30.00 ±56				
102-25-25	I Bar 4	4.000 ±0.080	101.60 ±2.03	1.000 ±0.005	25.40 ±0.13							1.000 ±0.020	25.40 ±0.51				
102-57-25	4	4.000 ±0.080	101.60 ±2.03	2.250 ±0.005	57.15 ±0.13	1.250 ±0.025	31.75 ±0.64	1.000 ±0.020	25.40 ±0.51	2.000 ±0.040	50.80 ±1.02	1.000 ±0.020	25.40 ±0.51				

TSC Ferrite International

							INDUCTANCE INDEX AL nH/N ²	
							ASTM Material Type	
							ASTM P7099	ASTM P7070
							ASTM P5099	
TSC FERRITE INTERNATIONAL U CORE EFFECTIVE CORE SET PARAMETERS							TSC Ferrite Material Grade	
	MAGNETIC PATH LENGTH	EFFECTIVE CORE AREA	EFFECTIVE CORE VOLUME	WINDOW AREA	POWER HANDLING CAPABILITY INDEX	CORE SET WEIGHT	TSF-BOOST TSF-7099 TSF-5099 +25%	TSF-7070 +25%
PART #	Le cm	Ae cm ²	Ve cm ³	Wa cm ²	WaAe cm ⁴	GRAMS		
39-19-10	10.79	0.78	8.42	3.74	2.92	44.60	1,796	1,995
41-10-11								
41-21-11	12.21	1.00	12.21	4.23	4.23	62.2	2,047	2,265
41-22-11	12.85	1.00	12.85	4.84	4.84	67.45	2,039	2,266
41-25-11	13.48	1.00	13.48	6.05	6.05	80.9	1,845	2,050
41-30-11	15.51	1.00	15.51	7.98	7.98	124.1	1,620	1,800
64-40-24	20.68	3.20	66.12	12.72	40.70	355	2,100	2,325
69-24-14	22.41	1.89	42.41	11.00	20.79	209.8	2,332	2,100
81-13-16								
81-33-16	22.41	1.91	42.80	19.35	36.97	259.06	2,099	2,332
93-28-16								
93-76-16	35.40	4.48	158.55	35.53	159.15	817.77	3,122	3,469
93-28-30								
93-76-30	35.40	8.40	297.22	35.53	298.34	1533	5,860	6,510
102-25-25								
102-57-25	25.76	6.45	166.15	32.26	208.06	1028.94	6,183	6,870